

D12H-P Demolition and Sorting Grab with cylinder 8-12t / 17600-26400lbs

Robust multi purpose grabs for excavators from 8t / 17600lbs to 12t / 26400lbs operating weight. Well-suited for demolition and separation of all kinds of building materials and waste.

- ▷ Including flat 15t rotator – **low height!** Integrated **non-return valve** to avoid peak-pressures.
- ▷ **High closing force** (36kN/7920lbf) thanks to two horizontal cylinders, completely protected by the shell carrier.
- ▷ The **end position** (grab open) is **hydraulically cushioned** to avoid damage to the cylinder when the grab is pushed into the material.
- ▷ The grab features a **perforated skin** to let fine dust and debris through without larger pieces getting caught. The durable, replaceable and **indexable wear blades** (500HB) enable the grabs to pinch with their edges without excessive wear.



Demolition and Sorting Grab D12H-P

Type	Width E (mm/in)	Opening A (mm/in)	Height C max. (mm/in)	Height C min. (mm/in)	Volume (liter/c.y.)	Weight (kg/lbs)	Load capacity (kg/lbs)
D12H-P-60	600 / 23.6	1550 / 61	1125 / 44.2	980 / 38.5	225 / 0.29	470 / 1034	3000 / 6600

Package consists of: demolition and sorting grab, **KINSHOFER** rotator, non-return valve, wear plates

KINSHOFER Rotator

Continuous rotation and two oil passages. Overload protection is ensured by pressure relief valves.

Type	Upper dimension (hole/Ø-hole pattern) (mm/in)	Torque (Nm/ft.lbs)	Bending moment max. (Nm/ft.lbs)
KM 15 F273/273	10 x M16; Ø 273 / 10.7	2000 / 1475	50000 / 36875

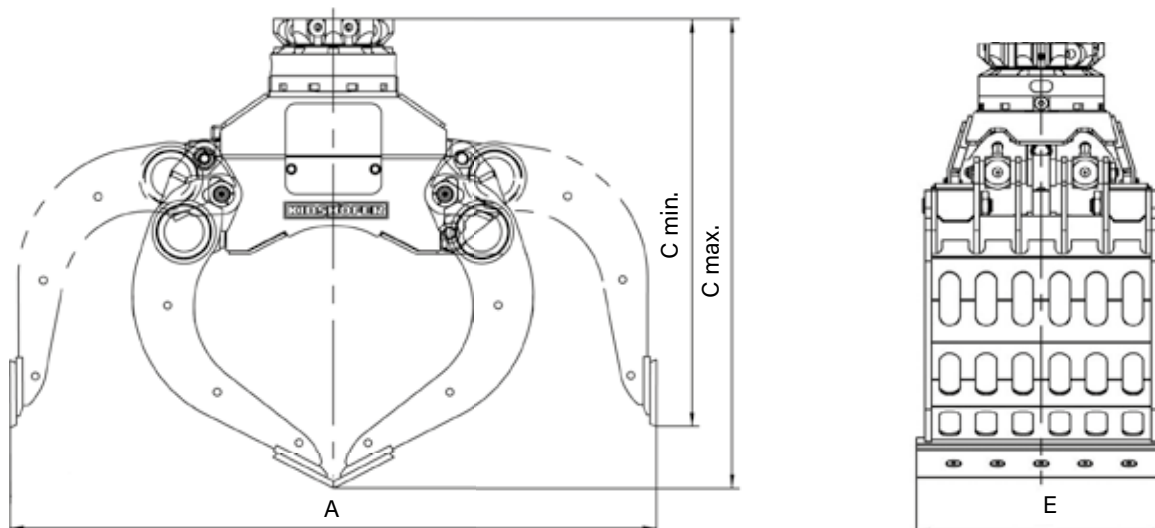
Accessories

Type	Description
KM 690 15t	adapter for rigid mounting – up to 15t/33000lbs
OQ45/4 rigid	bolt-on adapter for Oilquick OQ45 – 5t/11000lbs to 12t/26400lbs
KSW08 rigid	bolt-on adapter for system L-Lock KMS08L/KHS08L for rigid mounting – up to 12t/26400lbs
	adapters for quick change systems from other manufacturers or different sizes on request
KM 980-2 2t-8t c	solenoid valve for additional circuit, up to 26MPa/3770psi, incl. parts and mounting

Requirements of carrier machine

Operating pressure (open/close):	max. 32 MPa (320 bar) / 4640 psi
Recommended pump capacity (open/close):	75 - max. 150 l/min / 20 - max. 40 GPM
Hydraulic connection (open/close):	G 3/4" / G 1/2"
Operating pressure (rotate):	max. 20 MPa (200 bar) / max. 2900psi
Recommended pump capacity (rotate):	max. 60 l/min / max. 16 GPM

Technical drawing



D15H-P to D37H-P Demolition and Sorting Grabs 10-37t / 22000-81400lbs

Robust Demolition and Sorting Grabs for excavators from 10t/22000lbs to 37t/81400lbs operating weight. Well-suited for demolition and separation of all kinds of building materials and waste.

- ▷ **Robust, fully integrated rotation** with sturdy slewing ring to withstand external forces, with connecting hoses located inside the hub. Hydraulic quick change adapters are directly mountable to the head plate. Different bolt patterns are available. **Integrated pressure relief valve** to avoid peak-pressures in rotation motor(s).
- ▷ **Exceptional closing forces** provided by two horizontal hydraulic cylinders which are well protected by the carrier.
- ▷ The **end position (grab open)** is **hydraulically cushioned** to avoid damage to the cylinder when the grab is pushed into the material.
- ▷ The grabs feature **perforated shells** to let fine dust and debris through without larger pieces getting caught. The **durable, replaceable and indexable wear blades** (500HB) enable the grabs to pinch with their edges without excessive wear.



D24H-P

Demolition and Sorting Grabs D15H-P / D20H-P / D24H-P / D27H-P / D37H-P

Type	Width E (mm/in)	Opening A (mm/in)	Height C max. - min. (mm/in)	Volume (liter/c.y.)	Weight (kg/lbs)	Load capacity (kg/lbs)	Closing force (kN/lbf)	Operating weight (t/lbs)
D15H-P-80	800 / 31.5	1550 / 61.0	1215-1070 / 47.8-42.1	300 / 0.39	630 / 1386	4000 / 8800	27 / 5940	10-15 / 22000-33000
D20H-P-100	1000 / 39.4	1890 / 74.4	1400-1205 / 55.1-47.4	450 / 0.59	1120 / 2464	5000 / 11000	43 / 9460	14-20 / 30800-44000
D24H-P-100	1000 / 39.4	2005 / 78.9	1470-1235 / 57.9-48.6	650 / 0.85	1175 / 2585	5000 / 11000	42 / 9240	18-24 / 39600-52800
D27H-P-115	1150 / 45.3	2145 / 84.4	1575-1375 / 62.0-54.1	800 / 1.05	1600 / 3520	6000 / 13200	63 / 13860	20-27 / 44000-59400
D32H-P-120	1200 / 47.2	2200 / 86.6	1590-1460 / 62.6-57.5	900 / 1.18	2050 / 4510	8000 / 17600	89 / 19580	27-32 / 59400-70400
D37H-P-125	1250 / 49.2	2260 / 89.0	1620-1480 / 63.8-58.3	950 / 1.24	2100 / 4620	8000 / 17600	86 / 18920	32-37 / 70400-81400

Package consists of: demolition and sorting grab, integrated rotation with sturdy slewing ring, wear blades and non-return valve

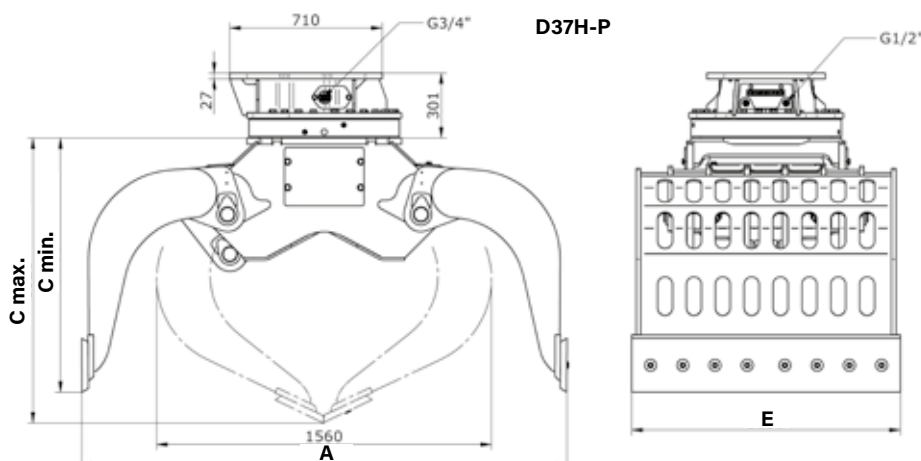
Accessories

Type	Description
KM 690 15t	adapter for rigid mounting - up to 15t/33000lbs
KM 690 20t	adapter for rigid mounting - up to 20t/44000lbs
KM 690 27t	adapter for rigid mounting - up to 27t/59400lbs
KM 690 32t	adapter for rigid mounting - up to 32t/70400lbs
OQ	bolt-on-adapter for Oilquick - up to 70t/154000lbs available
KSW10 rigid	bolt-on-adapter for system L-Lock KMS10L/KHS10L - up to 19t/41800lbs.
KSW21/25 rigid	bolt-on-adapter for system L-Lock KMS21/25L / KHS21/25L - up to 40t/88000lbs adapters for quick change systems from other manufacturers or different sizes available on request

Requirements of carrier machine

Operating pressure (open/close):	D15 - D20: max. 32 MPa (320 bar) / 4640psi; D24 - D37: max. 35 MPa (350 bar) / 5070psi
Pump capacity (open/close):	D15 - D37: 75 - max. 150 l/min / 20 - max. 40GPM
Hydraulic connections (rotate):	D15 - D20: G 3/4" / G 1/2"; D24 - D37: G 1" / G 1/2"
Operating pressure (rotate):	D15 - D37: max. 14 MPa (140 bar) / 2030psi
Pump capacity (rotate):	D15 - D37: max. 50 l/min / 13GMP

Technical drawings



Robust multi-purpose grab with perforated shells, for excavators up to 50t/110000lbs operating weight, the HD D-Series grabs are ideal for demolition and sorting of all kinds of building materials.

- ▷ **Robust Delta-box frame with dust-proof axle bearing points.** Perforated shells let fine dust and gravel through without large pieces getting caught
- ▷ **Durable and reversible cutting edges** can be used to pick up different materials, with their tips. Cutting edges on D19 series and higher can be turned three ways, reducing replacement costs.
- ▷ **Robust, fully integrated rotator** with sturdy slewing ring to withstand external forces, with pressure relief valve to ensure overload protection, and connecting hoses protected inside the hub.
- ▷ **Exceptional closing forces** achieved with a horizontally positioned hydraulic cylinder that is protected by the bucket carrier.
- ▷ **Cylinder is hydraulically cushioned.**



D24H-P-100HD

Heavy Duty Demolition and Sorting Grab D15H-P-75HD to D40H-P125HD

Type	Width E (mm/in)	Opening A (mm/in)	Height C max. (mm/in)	Volume (liter/c.y.)	Weight (kg/lbs)	Load capacity (kg/lbs)	Closing force (kN/lbf)	Torque (Nm/ft.lbs)	Operating weight (t/lbs)
D15H-P-75HD	750/ 29.5	1730/ 68.1	1220***/ 48.0	340/ 0.44	855***/ 1881	5000/ 11000	43/ 9460	3000/ 2212.5	10-18/ 22000-39600
D16H-P-90HD	900/ 35.4	1730/ 68.1	1220***/ 48.0	415/ 0.54	895***/ 1969	5500/ 12100	43/ 9460	3000/ 2212.5	12-20/ 26400-44000
D19H-P-85HD	850/ 33.5	1725/ 67.9	1225/ 48.2	365/ 0.48	1025/ 2255	6500/ 14300	50/ 11000	3000/5700*/ 2212.5/4203.8	12-24/ 26400-52800
D20H-P-100HD	1000/ 39.4	1865/ 73.4	1255/ 49.4	480/ 0.63	1115/ 2453	7000/ 15400	50/ 11000	3000/5700*/ 2212.5/4203.8	13-25/ 28600-55000
D24H-P-100HD	1000/ 39.4	1965/ 77.4	1340/ 52.8	570/ 0.75	1315/ 2893	8000/ 17600	56/ 12320	3000/5700*/ 2212.5/4203.8	15-30/ 33000-66000
D25H-P-100HD	1000/ 39.4	2050/ 80.7	1440***/ 56.7	650/ 0.85	1450***/ 3190	7000/ 15400	60/ 13200	5700**/ 4203.8	18-28/ 39600-61600
D27H-P-120HD	1200/ 47.2	2050/ 80.7	1440***/ 56.7	760/ 0.99	1495***/ 3289	8000/ 17600	60/ 13200	5700**/ 4203.8	20-30/ 44000-66000
D32H-P-110HD	1100/ 43.3	2195/ 86.4	1395/ 54.9	825/ 1.08	1790/ 3938	10500/ 23100	70/ 15400	7000**/ 5162.5	20-40/ 44000-88000
D40H-P-125HD	1250/ 49.2	2325/ 91.5	1480/ 58.3	960/ 1.26	2010/ 4422	13500/ 29700	80/ 17600	7000**/ 5162.5	30-50/ 66000-110000

Package consists of: demolition and sorting grab, integrated rotation with sturdy slewing ring, cutting edges and non-return valve

Optional second heavy duty motor for D19H-P HD, D20H-P HD, D24H-P HD

Note: *optional with 2 motors for rotation **second heavy duty hydraulic motor comes standard ***incl. CW4 (integrated)

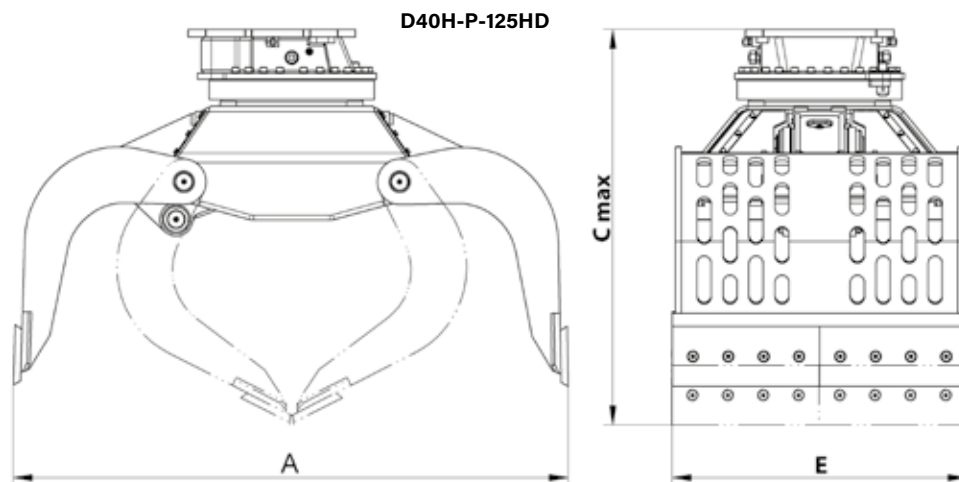
Accessories

Type	Description
KM 690	adapter for rigid mounting – up to 70t/154000lbs
OQ	bolt-on-adapter for Oilquick – up to 70t/154000lbs available
KSW rigid	bolt-on-adapter for system L-Lock KMS-L/KHS-L – up to 40t/88000lbs adapters for quick change systems from other manufacturers or different sizes available on request

Requirements of carrier machine

Operating pressure (open/close):	D15 - D40: max. 35 MPa (350 bar) / 5070psi
Pump capacity (open/close):	D15/D16: max.80 l/min / 21GPM; D19-D27: max.100 l/min / 26.5GPM; D32-D40: max.120 l/min/ 32Gpm
Operating pressure (rotate):	D15 - D40: max. 14 Mpa (140 bar) / 2030psi
Pump capacity (rotate):	D15 - D24: max. 40 l/min / 10.5GPM; D25 - D40: 40 - max. 60 l/min / 10.5 - max. 16GPM

Technical drawings



Robust multi-purpose grab with perforated shells, for excavators up to 80t/176000lbs operating weight, the HD D Series grabs are ideal for demolition and sorting of all kinds of building materials.

- ▷ **Robust Delta-box frame with dust-proof axle bearing points.** Perforated shells let fine dust and gravel through without large pieces getting caught.
- ▷ **Durable and reversable cutting edges** can be used to pick up different materials, with their tips. Cutting edges on D19 series and higher can be turned three ways, reducing replacement costs.
- ▷ **Robust, fully integrated rotator** with sturdy slewing ring to withstand external forces, with pressure relief valve to ensure overload protection, and connecting **hoses protected inside the hub.**
- ▷ **Exceptional closing forces** achieved with a horizontally positioned hydraulic cylinder that is protected by the bucket carrier.
- ▷ **Cylinder is hydraulically cushioned.**



Heavy Duty Demolition and Sorting Grabs

Type	Width E (mm/in)	Opening A (mm/in)	Height C max. (mm/in)	Volume (liter/c.y.)	Weight (kg/lbs.)	Load capacity (kg/lbs)	Closing force (kN/lbf)	Torque (Nm/ft.lbs)	Operating weight (t/lbs)
D40H-P-125HD	1250/49.2	2325/91.5	1480/58.3	960/1.26	2010/4422	13500/29700	80/17600	7000/5162.5	30-50 / 66000-110000
D50H-P-140HD	1400/55.1	2325/91.5	1495/58.9	1075/1.41	2390/5258	16500/36300	80/17600	7000/5162.5	35-60 / 77000-132000
D70H-P-150HD	1500/59.1	2700/106.3	1820/71.7	1660/2.17	4165/9163	23500/51700	140/30800	9000/6637.5	50-80 / 110000-176000

Package consists of: demolition and sorting grab, integrated rotation with sturdy slewing ring, cutting edges and non-return valve

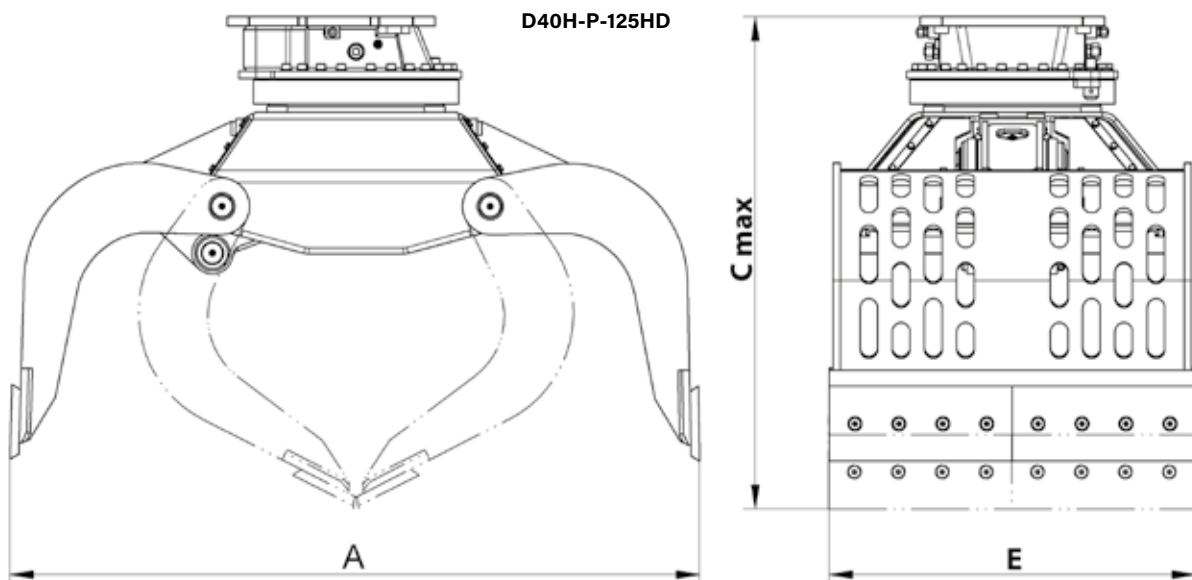
Accessories

Type	Description
KM 690	adapter for rigid mounting – up to 70t/154000lbs
OQ	bolt-on-adapter for Oilquick – up to 70t/154000lbs available
	adapters for quick change systems from other manufacturers or different sizes available on request

Requirements of carrier machine

Operating pressure (open/close):	max. 35 MPa (350 bar) / 5070psi
Pump capacity (open/close):	D40/D50: max. 120 l/min / 32.0GPM; D70: max. 200 l/min/ 53.0GPM
Operating pressure (rotate):	max. 14 Mpa (140 bar) / 2030psi
Pump capacity (rotate):	40 - max. 60 l/min / 10.5 - max. 16.0GPM

Technical drawings

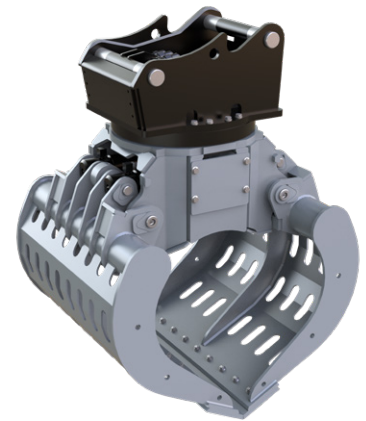


Demolition & Sorting Grabs incl. Integrated Adapter

D20H-P to D37H-P

Robust multi purpose grabs with integrated quick change adapter system Oilquick for excavators from 14t / 30800 lbs to 37t / 81400 lbs operating weight. Well-suited for the demolition and separation of all kinds of building materials and waste.

- ▷ **Robust, fully integrated rotation** with sturdy slewing ring to withstand external forces, with connecting hoses located inside the hub. **Integrated pressure relief valve** to avoid peak-pressures.
- ▷ **Oilquick quick change adapter integrated, providing a low height.**
- ▷ **Exceptional closing forces** provided by two horizontal hydraulic cylinders which are well protected by the carrier.
- ▷ The **end position (grab open)** is **hydraulically cushioned** to avoid damage to the cylinder when the grab is pushed into the material.
- ▷ The grabs feature **perforated shells** to let fine dust and debris through without larger pieces getting caught. The **durable, replaceable and indexable wear blades** (500HB) enable the grabs to pinch with their edges without excessive wear.



D20H-P-OQ65

Grab with integrated Quick Change Adapter D20H-P-OQ to D37H-P-OQ

Type	Width E (mm/in)	Opening A (mm/in)	Height C max. (mm/in)	Height C min. (mm/in)	Volume (liter/c.y.)	Weight (kg/lbs)	Load capacity (kg/lbs)	Closing force (kN/lbf)	Operating weight (t/lbs)
D20H-P-OQ65	1000/39.4	1890/74.4	-	1320/52.0	450/0.59	1060/2332	5000/11000	43/9460	14-20/ 30800-44000
D24H-P-OQ65	1000/39.4	2005/79.9	-	1350/52.0	650/0.85	1120/2464	5000/11000	42/9240	18-24/ 39600-52800
D27H-P-OQ70/55	1150/45.3	2140/84.3	1700/66.9	1500/59.1	800/1.05	1500/3300	6000/13200	63/13860	20-27/ 44000-59400
D32H-P-OQ70/55	1200/47.2	2200/86.6	1710/67.3	1580/62.2	900/1.18	1960/4312	8000/17600	89/19580	27-32/ 59400-70400
D32H-P-OQ80	1200/47.2	2200/86.6	1750/68.9	1620/63.8	900/1.18	2000/4400	8000/17600	89/19580	27-32/ 59400-70400
D37H-P-OQ80	1250/49.2	2260/86.6	1750/68.9	1610/63.4	950/1.24	2100/4620	8000/17600	86/18920	32-37/ 70400-81400

Package consists of: demolition and sorting grab, integrated rotation with adapter for Oilquick, wear blades and non-return valve

Other sizes on request

Requirements of carrier machine

Operating pressure (open/close):	D20/D24/D27: max. 32 MPa (320 bar/4640psi); D32/D37: max. 35 MPa (350 bar/ 5070psi)
Pump capacity (open/close):	75 - max. 150 l/min / 20 - max. 40GPM
Operating pressure (rotate):	max. 14 MPa (140 bar/2030psi)
Pump capacity (rotate):	max. 50 l/min / 13GMP

Technical drawings

